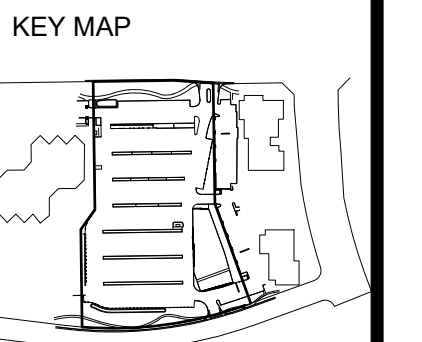




**SCHETTER ELECTRIC LLC**  
Contracting and Engineering  
471 Bannon Street  
Sacramento, CA 95811  
(916) 446-2521  
Fax (916) 446-2624  
CA License No. 1049534

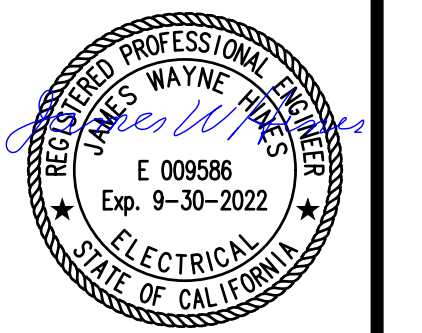


**REVISIONS**  
No. Date Description  
05/19/21 PERMIT SET



**PROJECT**  
**KAISER ROSEVILLE TEMPORARY PARKING LOT**  
2130 DOUGLAS BLVD.  
ROSEVILLE, CA 95661

THESE PLANS HAVE BEEN PREPARED BY SCHETTER ELECTRIC, L.L.C. IN ACCORDANCE WITH THE CALIFORNIA BUSINESS AND PROFESSIONS CODE SECTION 6737.3 FOR EXCLUSIVE USE BY SCHETTER ELECTRIC, L.L.C. AND ARE NOT TO BE USED FOR THE PURPOSE OF BIDDING OR INSTALLATION BY ANY OTHER ELECTRICAL CONTRACTOR.

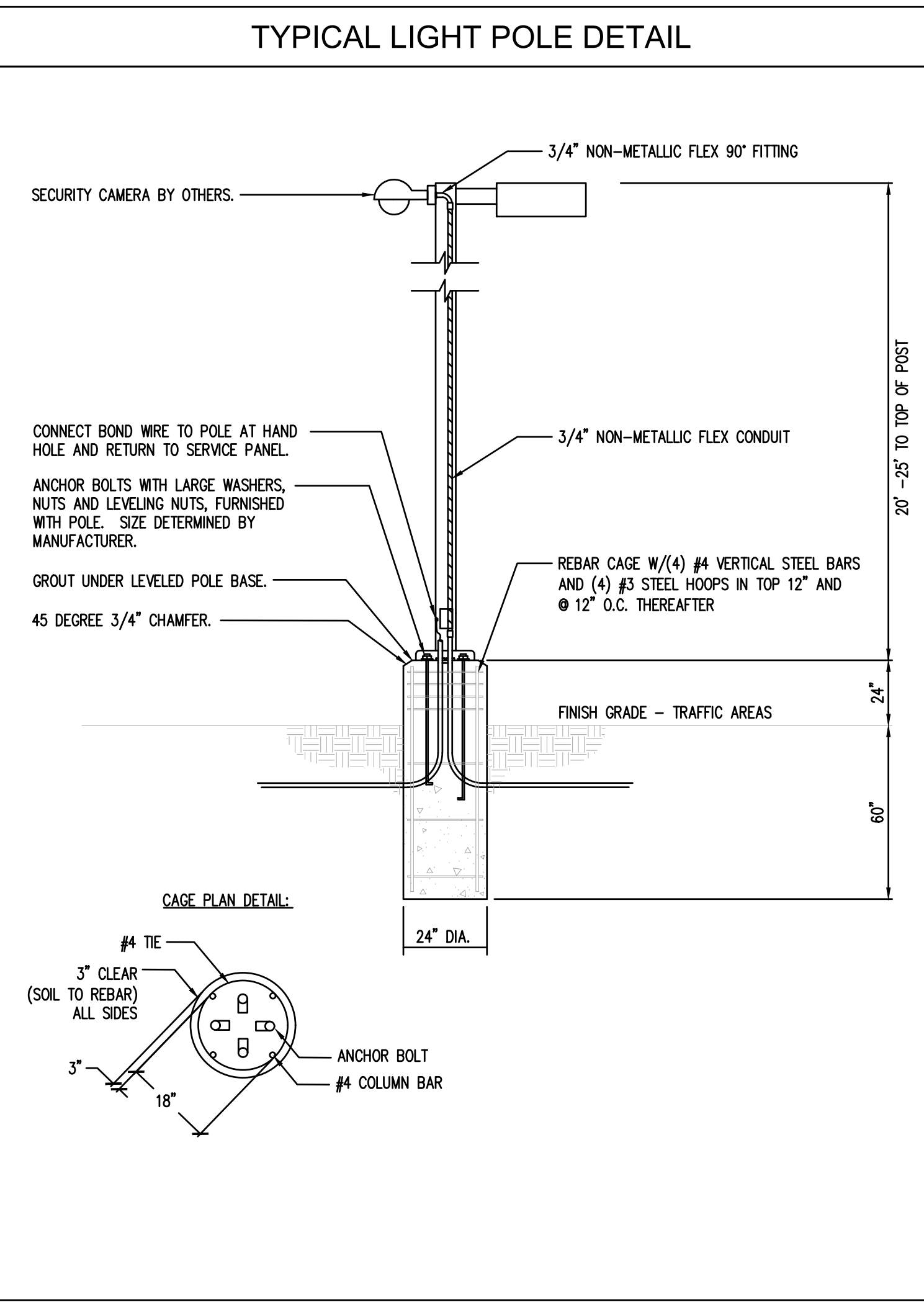
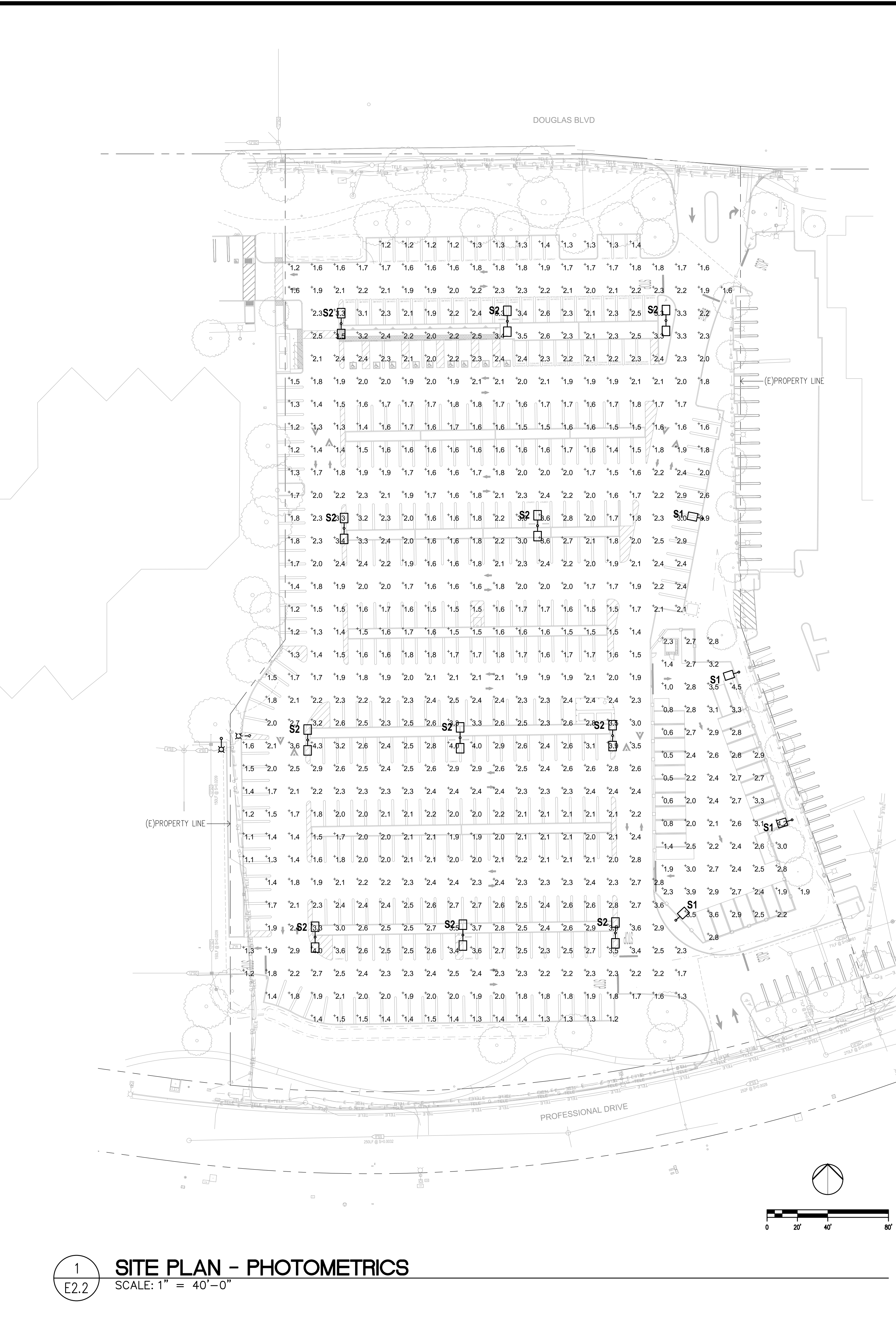


SIGNATURE DATE: 5/19/2021

SHEET TITLE

SITE PLAN - PHOTOMETRICS

Proj Mgr WM  
Drawn by KH  
Date 05/19/2021  
Job No. 2140003  
SHEET: E2.2



### Statistics

Description	Symbol	Avg	Max	Min	Max/Min	Avg/Min
CONNEX YARD	+	2.5 fc	4.5 fc	0.5 fc	9.0:1	5.0:1
PARKING LOT	+	2.1 fc	4.3 fc	1.1 fc	3.9:1	1.9:1



### LUMINAIRE TYPE 'S1' AND 'S2'

**D-Series Size 0 LED Area Luminaire**

**Specifications**  
EPA: 0.95 ft² (0.09 m²)  
Length: 26" (660 mm)  
Width: 13" (330 mm)  
Height: 3" (76 mm)  
Height: 7" (178 mm)  
Weight: 16 lbs (7.2 kg)

**Introduction**  
The modern styling of the D-Series is striking yet unobtrusive - making a bold, progressive statement even as it blends seamlessly with its environment. The D-Series distills the benefits of the latest in LED technology into a high performance, high efficiency, long-life luminaire. The outstanding photometric performance results in sites with excellent uniformity, greater pole spacing and lower power density. It is ideal for replacing up to 400W metal halide with typical energy savings of 70% and expected service life of over 100,000 hours.

**Ordering Information** EXAMPLE: DSX0 LED P6 40K T3M MVOLT SPA NLTAIR2 PIRHN DDBXD

Series	LEDs	Color temperature	Distribution	Voltage	Mounting
DSX0 LED	Forward optics	30K 3000K	T15 Type I short (Automotive)	MVOLT (120V-277V) <sup>16</sup>	Shipped included
	P1 P5	40K 4000K	T25 Type I short	XVOLT (277V-480V) <sup>16</sup>	SPA Square pole mounting
	P2 P6	50K 5000K	T24 Type I medium	120"	RPA Round pole mounting <sup>16</sup>
	P1 P1		T25 Type I short	208"	WBA Wall bracket <sup>16</sup>
	P4		T3M Type II medium	240"	SPUMBA Square pole universal mounting adapter <sup>16</sup>
	Rotated optics		T4M Type II medium	277"	RPLUMBA Round pole universal mounting adapter <sup>16</sup>
	P1P P2P		T3TM Forward throw medium	347"	Shipped separately
	P1P P3P		T3TS Type V very short <sup>16</sup>	480"	KWAB DDBXD U <sup>16</sup> Round arm mounting bracket adapter (square) <sup>16</sup>

**Control options**

Control options	Other options	Finish
Shipped installed	PR High-flow motion/ambient sensor 5'-10' mounting height, ambient sensor enabled at 50' <sup>16</sup>	SDR0 Dark bronze
NEMZB nLight generation 2 enabled <sup>16</sup>	PIRH High-flow motion/ambient sensor 15'-30' mounting height, ambient sensor enabled at 50' <sup>16</sup>	SLBK Black
PIRHN Network, high-flow motion/ambient sensor <sup>16</sup>	PIRHCV High-flow motion/ambient sensor 5'-10' mounting height, ambient sensor enabled at 50' <sup>16</sup>	DNAD Natural aluminum
PER NEMA two-lock receptacle only (control ordered separately) <sup>16</sup>	PIRHCV High-flow motion/ambient sensor 5'-10' mounting height, ambient sensor enabled at 50' <sup>16</sup>	DNWD White
PER5 Two-pin receptacle only (control ordered separately) <sup>16</sup>	PIRHCVV High-flow motion/ambient sensor 5'-10' mounting height, ambient sensor enabled at 50' <sup>16</sup>	SDR2 Distressed dark bronze
PER7 Seven-pin receptacle only (finish not future) (control ordered separately) <sup>16</sup>	PIRHCVV High-flow motion/ambient sensor 5'-10' mounting height, ambient sensor enabled at 50' <sup>16</sup>	SLBK0 Distressed black
DMS 0-10V dimming (not out back) for external control (control ordered separately) <sup>16</sup>	FAD Field adjustable output <sup>16</sup>	DNATD Distressed natural aluminum
		DNWD0 Distressed white

**Other options**  
S1 Shipped separately  
S2 Shipped separately  
S3 Shipped separately  
S4 Shipped separately  
S5 Shipped separately  
S6 Shipped separately  
S7 Shipped separately  
S8 Shipped separately  
S9 Shipped separately  
S10 Shipped separately  
S11 Shipped separately  
S12 Shipped separately  
S13 Shipped separately  
S14 Shipped separately  
S15 Shipped separately  
S16 Shipped separately  
S17 Shipped separately  
S18 Shipped separately  
S19 Shipped separately  
S20 Shipped separately  
S21 Shipped separately  
S22 Shipped separately  
S23 Shipped separately  
S24 Shipped separately  
S25 Shipped separately  
S26 Shipped separately  
S27 Shipped separately  
S28 Shipped separately  
S29 Shipped separately  
S30 Shipped separately  
S31 Shipped separately  
S32 Shipped separately  
S33 Shipped separately  
S34 Shipped separately  
S35 Shipped separately  
S36 Shipped separately  
S37 Shipped separately  
S38 Shipped separately  
S39 Shipped separately  
S40 Shipped separately  
S41 Shipped separately  
S42 Shipped separately  
S43 Shipped separately  
S44 Shipped separately  
S45 Shipped separately  
S46 Shipped separately  
S47 Shipped separately  
S48 Shipped separately  
S49 Shipped separately  
S50 Shipped separately  
S51 Shipped separately  
S52 Shipped separately  
S53 Shipped separately  
S54 Shipped separately  
S55 Shipped separately  
S56 Shipped separately  
S57 Shipped separately  
S58 Shipped separately  
S59 Shipped separately  
S60 Shipped separately  
S61 Shipped separately  
S62 Shipped separately  
S63 Shipped separately  
S64 Shipped separately  
S65 Shipped separately  
S66 Shipped separately  
S67 Shipped separately  
S68 Shipped separately  
S69 Shipped separately  
S70 Shipped separately  
S71 Shipped separately  
S72 Shipped separately  
S73 Shipped separately  
S74 Shipped separately  
S75 Shipped separately  
S76 Shipped separately  
S77 Shipped separately  
S78 Shipped separately  
S79 Shipped separately  
S80 Shipped separately  
S81 Shipped separately  
S82 Shipped separately  
S83 Shipped separately  
S84 Shipped separately  
S85 Shipped separately  
S86 Shipped separately  
S87 Shipped separately  
S88 Shipped separately  
S89 Shipped separately  
S90 Shipped separately  
S91 Shipped separately  
S92 Shipped separately  
S93 Shipped separately  
S94 Shipped separately  
S95 Shipped separately  
S96 Shipped separately  
S97 Shipped separately  
S98 Shipped separately  
S99 Shipped separately  
S100 Shipped separately

### LITHONIA LIGHTING

**FEATURES & SPECIFICATIONS**

**INTENDED USE** - These specifications are for USA standards only. Square Straight Steel is a general purpose light pole for up to 30-foot mounting heights. This pole provides a robust yet cost-effective option for mounting area lights and floodlights.

**CONSTRUCTION** - Pole shaft: of uniform dimension and wall thickness and is made of a weldable-grade, hot-rolled, commercial-quality steel tubing with a minimum yield of 50 KSI (11 gauge, 116"), or 50 KSI (7 gauge, 179"). Shaft is one-piece with a full-length longitudinal high-frequency electric resistance weld. Uniformly square in cross-section with flat sides, small corner radii and excellent torsional qualities. Available shaft widths are 4", 5" and 6".

**Pole Top**: A flush non-metallic black top cap is provided for all poles that will receive drilling patterns for side-mount luminaire arm assemblies or when ordered with FI option.

**Handhole**: A reinforced handhole with grousing provision is provided at 10' from the base on side A. Positioning the handhole lower may not be possible and requires engineering review consult Tech Support-Outdoor for further information. Every handhole includes a cover and cover attachment hardware. The handhole has a nominal dimension of 2.5' x 5'.

**Base Cover**: A durable ABS plastic two-piece full base cover, finished to match the pole, is provided with each pole assembly. Additional base cover options are available upon request.

**Anchor Base/ Bolts**: Anchor base is fabricated from steel that meets ASTM A36 standards and can be altered to match existing foundations; consult factory for modifications. Anchor bolts are manufactured to ASTM F1554 Standards grade 55, 65 KSI minimum yield strength and tensile strength of 75-95 KSI. Top threaded portion (nominal 12") is hot-dipped galvanized per ASTM A-153.

**HARDWARE** - All structural fasteners are high-strength galvanized carbon steel. All non-structural fasteners are galvanized or zinc-plated carbon steel or stainless steel.

**FINISH** - Extra-durable standard powder-coat finishes include Dark Bronze, White, Black, Medium Bronze and Natural Aluminum colors. Classic finishes include Sandstone, Charcoal Gray, Tennis Green, Bright Red and Steel Blue colors. Architectural Colors and Special Finishes are available by quote and include, but are not limited to: Hot-dipped Galvanized, Flame over Hot-dipped Galvanized, RAL Colors, Custom Colors and Extended Warranty Finishes. Factory-applied primer paint finish is available for customer field-paint applications.

**WARRANTY** - 1-year limited warranty. Complete warranty terms located at: [www.lithonia.com/support/warranty/terms-and-conditions](http://www.lithonia.com/support/warranty/terms-and-conditions)

**NOTE**: Actual performance may differ as a result of end-user environment and application. Specifications subject to change without notice.

**Anchor Base Poles**  
**SSS**  
SQUARE STRAIGHT STEEL

COMMERCIAL OUTDOOR

One Lithonia Way • Conyers, Georgia 30012 • Phone: 1-800-705-SERV (7378) • [www.lithonia.com](http://www.lithonia.com)  
© 2011-2021 Acuity Brands Lighting, Inc. All rights reserved.

Downloaded 05/19/21  
Page 1 of 6

1 SITE PLAN - PHOTOMETRICS  
E2.2 SCALE: 1" = 40'-0"